



## Ranger Front Bumper Instructions (P1813P368MB)

\*\*\*NOTE: Prior to installation, please verify if a revised version of this instruction sheet is available on [proarmor.com](http://proarmor.com).\*\*\*



Using provided hardware (shorter- 13mm Bolts and nuts x 6), fasten lower bumper plate to upper portion of bumper as shown. Place lower section on top of the of flange of upper section, lining up bolt holes at each of the six (6) locations.



Remove the grille by pushing down on the tabs and set to the side.



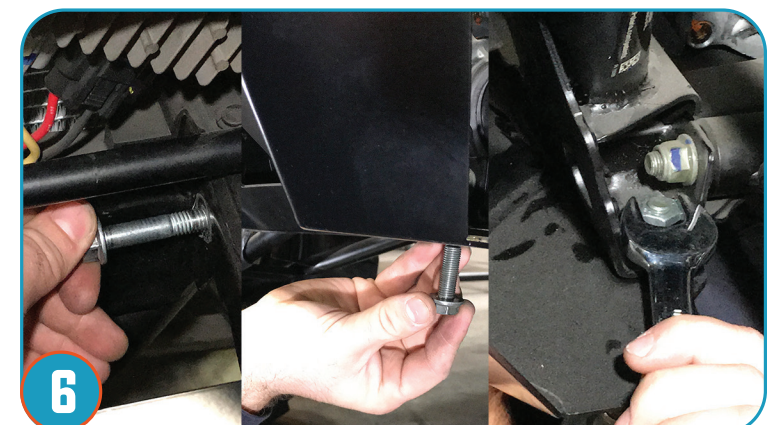
Remove 2 lower bolts of stock bumper.



Remove 2 upper bolts and remove stock bumper.



Place Pro Armor bumper onto vehicle sliding bumper arms into mounting slots.



Using the removed bolts and nuts from step 3/4, re-apply at same mounting points, loosely holding bumper in place.

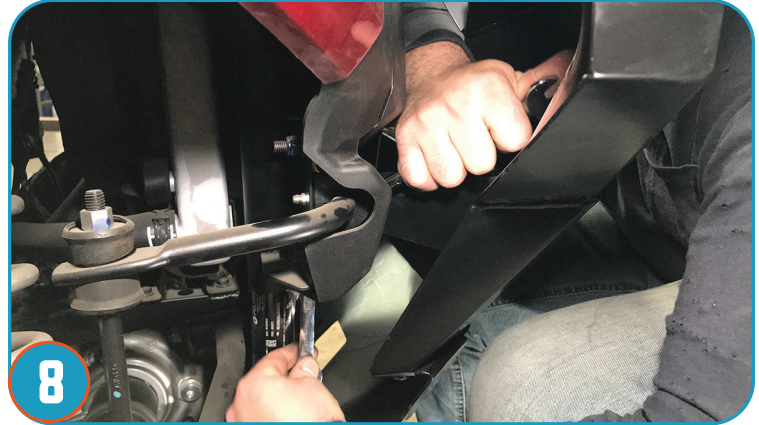




## Ranger Front Bumper Instructions (P1813P368MB)



Before tightening, insert the grille removed in step 2, back into place sliding grille between bumper and vehicle and clip into position.



Firmly tighten all (4) Bolts & nuts to secure front bumper to your vehicle.



- **Never** stick hands, head or arms outside of vehicle at any time when it is in motion.
- **Always** wear and use proper safety equipment when using any Pro Armor product.
- Improper use of directions and/or product can result in injury to yourself or damage to your vehicle.

• **Disclaimer please read:** This product is sold without warranty expressed or implied. No warranty or representation is made as to the products ability to protect the user / occupant from any injury or death in any manner of use. The user assumes that risk. The effectiveness of this equipment is directly related to the manner in which it is installed, used, and / or maintained.

**Proper installation is solely the responsibility of the installer, and will not be assumed by Pro Armor.**

- If you have questions about your installation or are unable able to complete installation, contact Pro Armor Customer Service (888)312-7667 or have an authorized dealer or trained technician, inspect your installation.

**⚠ WARNING**