

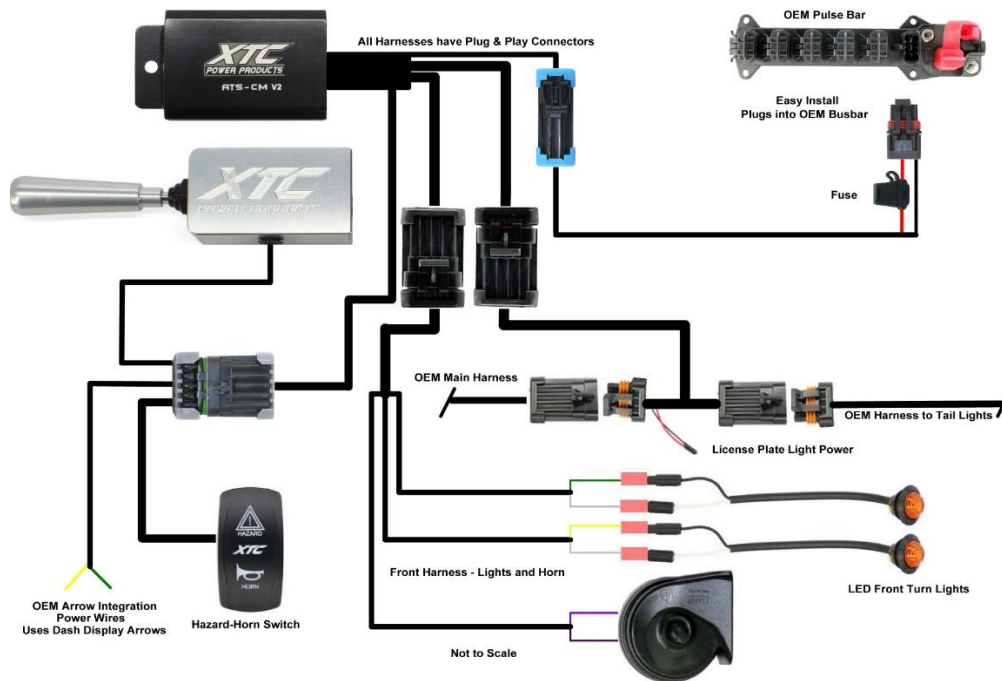


# Polaris General Self-Canceling Turn Signal System

Thank you for purchasing XTC Power Products Automatic Self-Canceling Turn Signal System. Our Easy Install Turn Signal System is unique from the other kits on the market. This kit is from our Plug & Play™ product line, no wires to cut, no crimping with only power, ground and plugs into the OEM Tail Light Harness, utilizing the brake lights as Brake and Turn Signals.

The below instructions cover basic install instructions. Please remember that the Control Module and switches can be mounted in many places, we only give suggestions. We only interface with the OEM wiring at the Rear Light Harness and the Power Busbar Plugs in under the hood.

Please read the instructions fully and familiarize yourself with the components before starting the install. The diagram below shows the overall system layout.



1. Remove the hood and Dash cover if installing under the dash, and the center console or panel



2. Mount the Control Module using the self-tapping screw provided. The Control Box may be mounted under the dash or under the hood. Make sure before mounting the Control Module, that the turn switch harness can make it to the dash where you want the switches mounted.

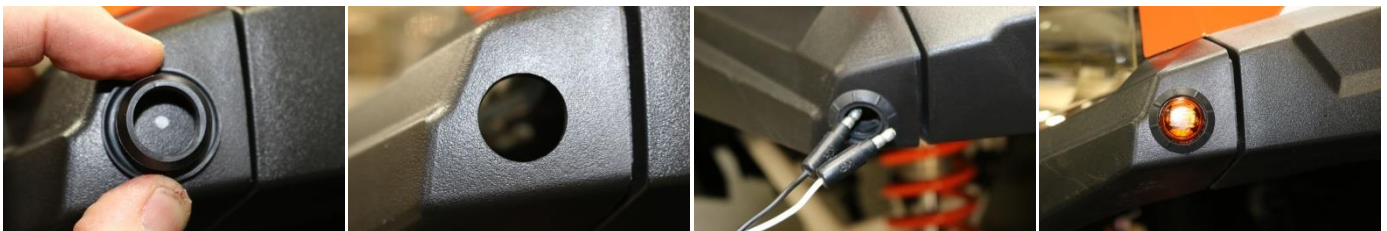
**WARNING! Make sure to keep the harness away from any hot or moving parts**

3. Under the rear bed is the OEM rear taillight harness, unplug the connector and plug our long harness into it. Run the 4 Pin connector to the front of the car. Follow the air intake tube down to the center of the car, the cable can be pulled through the inspection area in the cab up the fire wall to the Control Module. Insert this connector into the mating module connector.

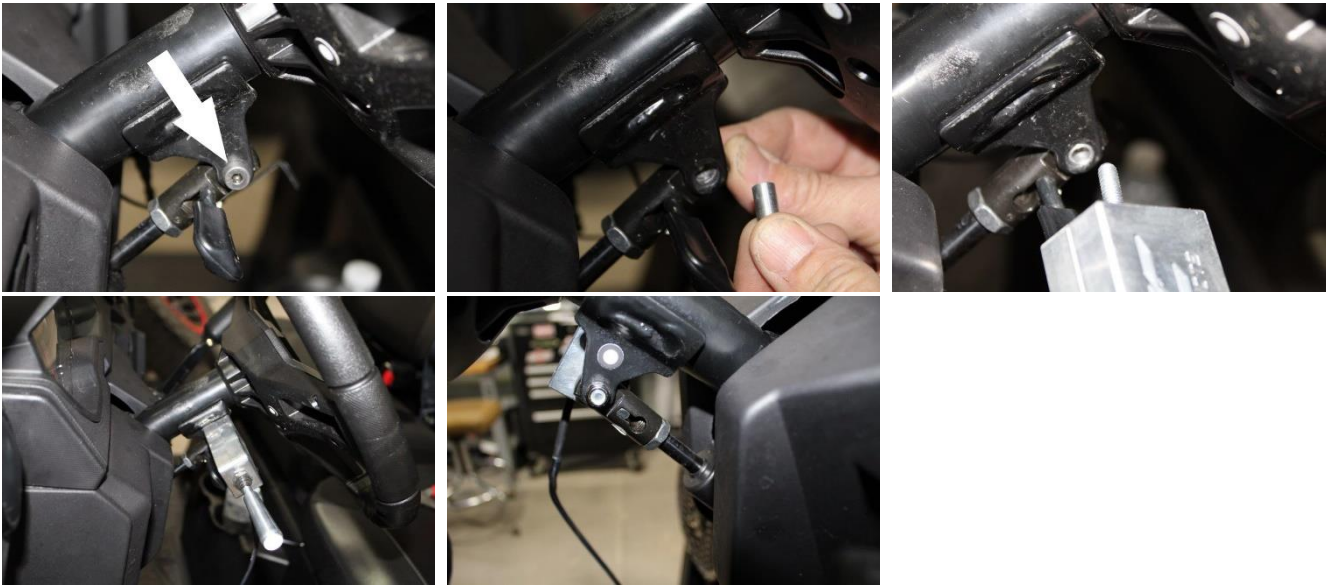


**WARNING! Verify that there is clearance where you want to mount the front LED lights before drilling the holes.**

4. Front LED Turn Lights – The front LED Turn Indicators can be mounted with the rubber grommet or without. If the grommet is **not** being used drill 5/8” holes. If the grommet is being used drill 3/4” holes. Remove and install the rubber grommet from the LED into the hole if being used. Insert LED into the hole with the Top marking up. NOTE: the TOP marking is on the front of the LED lens. The Lights may be mounted anywhere on the front of the car, for the sample we chose the corner of the trim because it can be seen from both the front and side of the car, **on the General clearance is very tight.** If choosing this location use the rubber grommet as a template and mark as far forward and as low as you can to avoid lip on inside.



5. Plug the short Front Harness into the Control Module. Run the front right and left wire harness through the center grommet as shown, the green and white wire go to the right side of the car and the yellow and white go to the left side, connect the green wire to right black wire and yellow wire to left black wire and white to white on both. **NOTE: The Black LED wire is positive and goes to the yellow and green wires, they will not work if reversed, white is ground. Secure the Harness using the provided cable ties.**
6. Mount Billet Turn Handle – Run the billet handle wire from inside the dash to the steering wheel, remove the screw that holds the steering wheel tilt lever, discard the hardware removed, install the lever bolt through the removed bolt hole, make sure to put the new bushing in the center and secure with the included nut. Line switch housing up and tighten mounting nut. Secure wire harness with included cable ties.



7. Install the Horn/Hazard Switches. Using a new sharp razor, cut one switch rectangles out. Do not over cut, try inserting switch and trim as necessary. It helps to rock the razor to cut. Run Switch Harness – Plug the Switch Harness into the Control Module, run the connectors through the rectangle switch cutouts and use included grease on switch terminals, then connect and slide switch into dash.



**Connect to OEM Dash Indicators - Note: The connector has power in it, disconnect the battery during installation.**

There is a 2-wire harness that has green and yellow wires coming out of it. The Ranger uses the green and yellow wires to light the Arrows in the OEM instrument cluster.

8. Unplug Connector – From the rear of the Instrument Cluster. Remove Connector Lock – Using a small screwdriver push in on both sides at the white connector shown below and slide lock off.



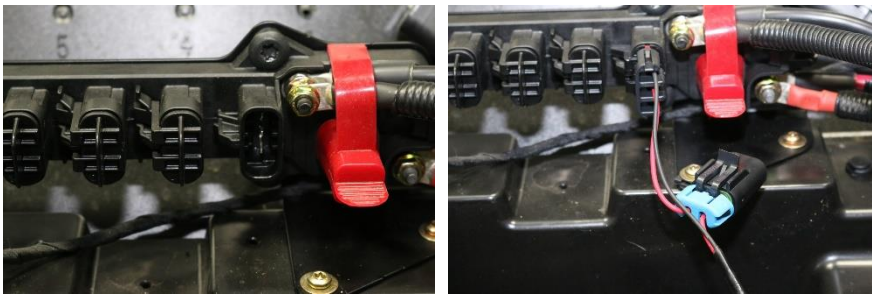
9. Remove Plugs – Using a pair of needle nose pliers remove the plugs from wire port 6 and 7, insert green wire terminal into 6 and yellow wire terminal into port 7.



10. Close Cover – Run ATS wires alongside the OEM harness and snap shut, re-install plastic locking cover and plug back in.
11. Install the Horn. Install the Horn mounting bracket to the horn. Pull out a Busbar Torx screw or using the included #10 x 1" screw, mount the horn in one of the plastic holes as shown above. Connect the violet wire to one of the horn terminals and the black wire to the other terminal.



12. Plug the Power Harness into the Control Module. Run the power wire to the Busbar, remove one of the blanks and plug into the Busbar. Remove the Torx screw and attach the fuse holder and reinstall the Torx screw.



13. **Verify Operation:** The System uses momentary switches to activate. Press the Right or Left Actuator accordingly. You can cancel the signal at any time by pushing the activated switch a second time or it will cancel as follows:
  - Press 1 Second for Lane Change, will stay on approx. 8 Seconds / 10 Flashes
  - Press 2 Seconds for Slowing to Turn Corners, will stay on approx. 20 Seconds / 30 Flashes
  - Press 5 Seconds for Traffic Lights when stopping and waiting, will stay on approx. 75 Seconds / 110 FlashesThe Systems Automatic Self-Cancelling may be overridden/Shut Off at any time by pushing the activated switch.  
Hazard Lights - press to activate and press again to deactivate, it does not self-cancel.

14. Using the provided Cable Tie's secure the harness completely. Reinstall removed parts.

We can be reached by email at [support@xtcpowerproducts.com](mailto:support@xtcpowerproducts.com)

XTC Power Products  
A Division of XTC Motorsports LLC  
380 E Comstock Dr.  
Chandler AZ 85225  
480-558-8588  
[www.xtcpowerproducts.com](http://www.xtcpowerproducts.com)

\*Disclaimer: This kit is intended for off road use only and XTC Motorsports claims no responsibility for its use. It is up to the purchaser to make sure it complies with all Federal, State and Local laws. R1.2  
Copyright © 2021 XTC MOTORSPORTS LLC, all rights reserved.