

Polaris Ranger 2" Front Receiver Hitch



Product Instructions | Part No: 85705

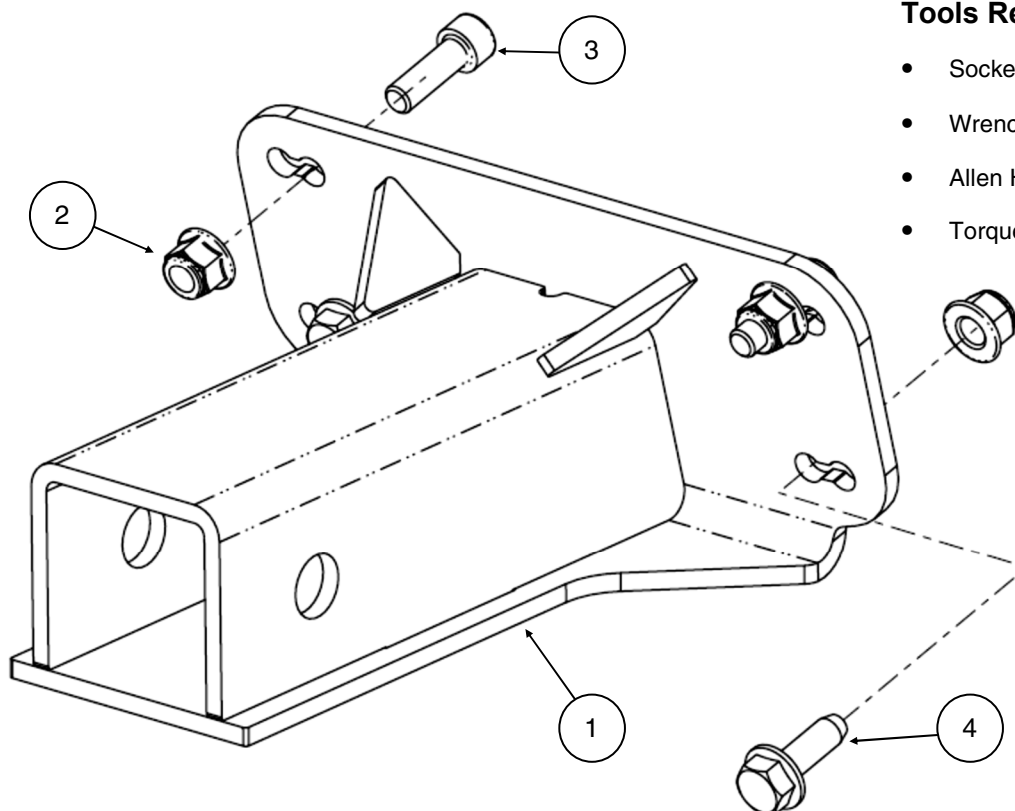
Application: Polaris Ranger XP 1000 / Ranger 1000, verify accessory fitment at Kolpin.com.

Before You Begin: Read these instructions and check to be sure all parts and tools are accounted for. Please retain these installation instructions for future reference and parts ordering information.

Note: If any hardware is missing, do not return to the store. Call us to help, Toll Free 1-877-956-5746.

This Kit includes:

Item	Qty	Part Description
1	1	Ranger Front Receiver
2	4	Flange Locknut, Zinc Plated, M8-1.25
3	2	Socket Head Cap Screw, Zinc Plated, M8 x 1.25 - 25mm LG
4	2	Self-Start Screw, Zinc Plated, M8 x 1.25 - 25mm LG
5	1	Instruction Guide (not shown)



Tools Required:

- Socket Set, Metric
- Wrench Set, Metric
- Allen Hex Key Set, Metric
- Torque Wrench

Assembly Time: Approximately 10 minutes

Older Ranger with Smaller Front Gearcase / Newer Ranger with Larger Front Gearcase Note: The 85705 kit will fit older Ranger vehicles with smaller front gearcase and newer Ranger vehicles with larger front gearcase. The instructions will guide through commonly shared steps and model-specific steps where noted.

Important: Your Kolpin Front Receiver Kit is exclusively designed for your vehicle. Please read the installation instructions thoroughly before beginning. Installation is easier if the vehicle is clean and free of debris. For your safety, and to ensure a satisfactory installation, perform all installation steps correctly in the sequence shown.

Kolpin Outdoors, Inc. | 9955 59th Ave N | Plymouth, MN 55442

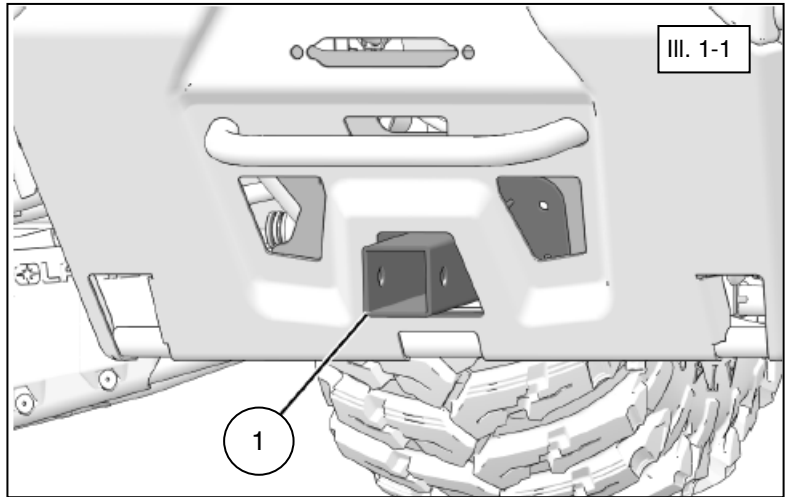
(877) 956-5746 or (763) 478-5800 | www.kolpin.com | customerservice@kolpin.com

Installation Instructions:

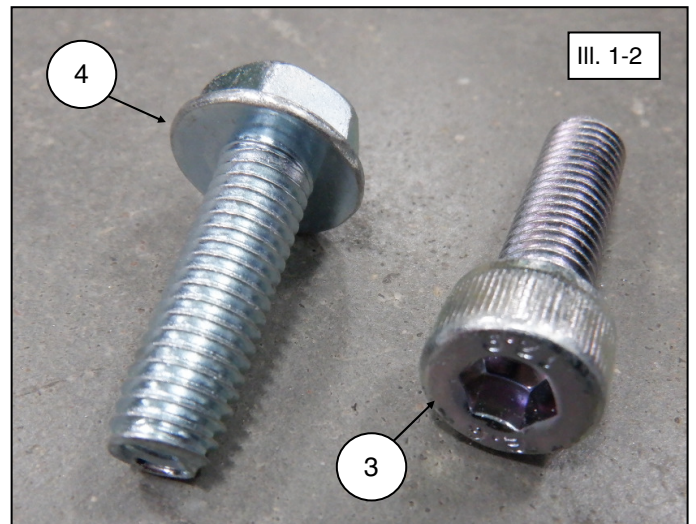
! WARNING

Do not exceed maximum capacities. Exceeding maximum capacities may result in receiver failure, resulting in death, serious personal injury, or serious damage to vehicle or property.

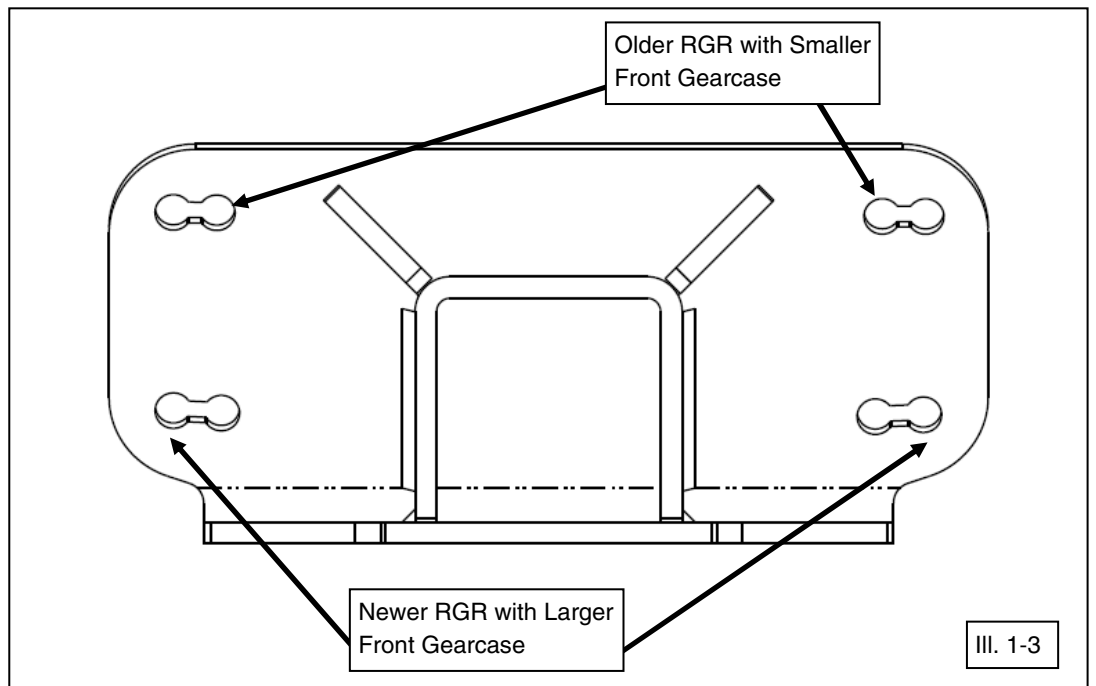
Maximum Tongue Weight: 100 lbs (45 Kg)
Maximum Tow Weight: 1200 lbs (540 Kg)



1. Shift vehicle transmission into "PARK". Turn key to "OFF" position and remove from vehicle.
2. Position front receiver (item #1) immediately behind front bumper, then insert forward end of receiver through bumper cutout. (See illustration 1-1). **Note, if Kolpin or Polaris winch is already installed on vehicle, the front bumper may have to be removed for easiest access to install receiver hitch.**
3. Screws (item #3 and #4) have the same thread and length dimensions. (See illustration 1-2). Differentiate them as follows:
 - Item #3 has a blunt tip with hex key drive
 - Item #4 has a tapered end and triangular lobes with hex flange head drive

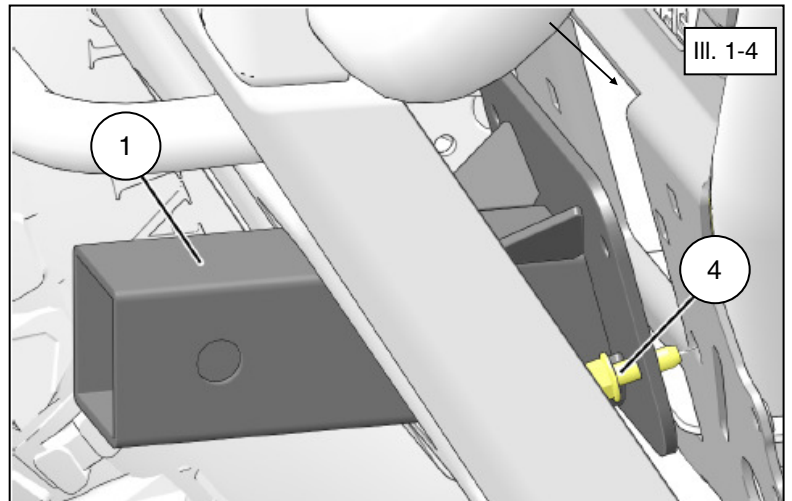


4. The receiver mount (item #1) has two different sets of screw holes. This inside set is for older Rangers with smaller front gearcase. The outside set is for newer Rangers with larger front gearcase. (See illustration 1-3).

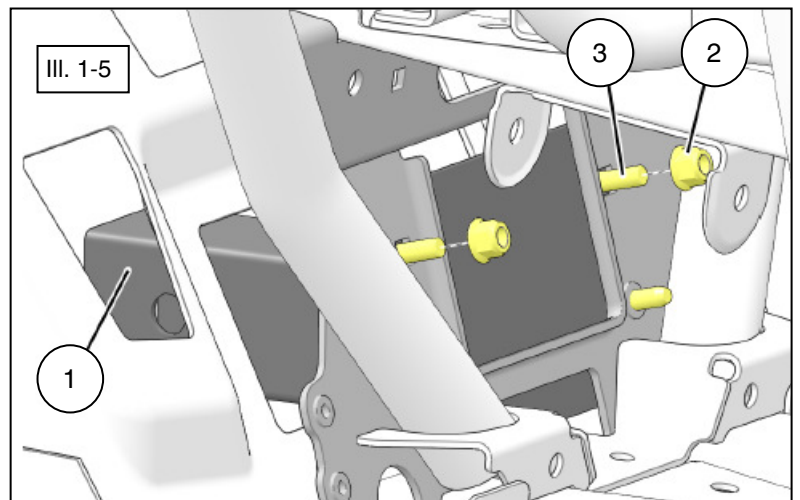


Installation Instructions (Continued):

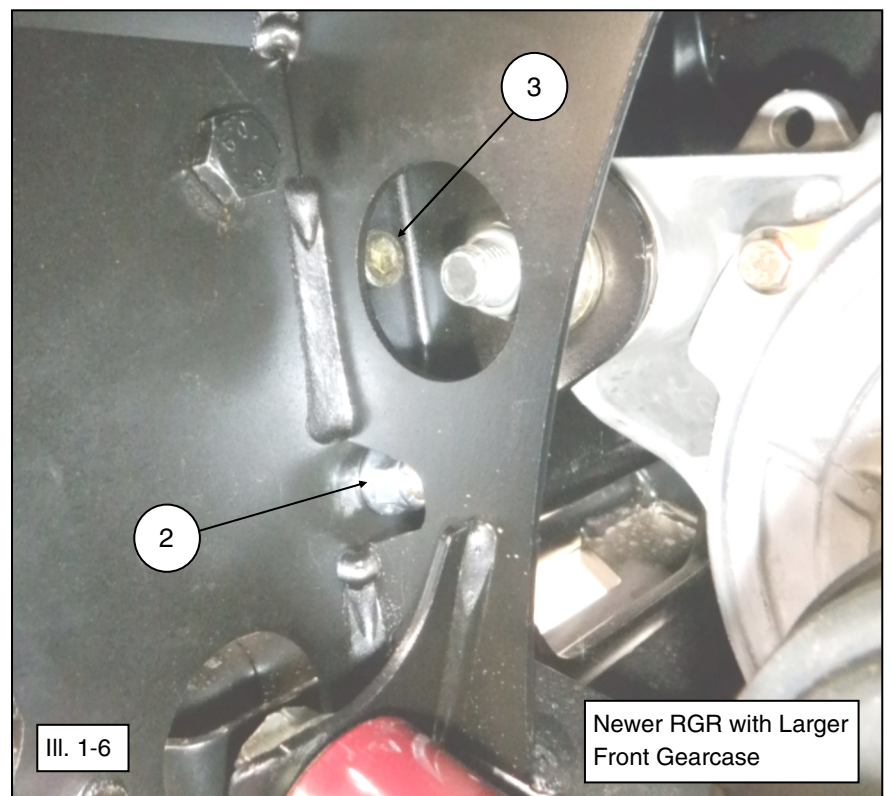
5. Loosely install front receiver (item #1) to vehicle using two self-starting screws (item #4) at LOWER fastener holes. (See illustration 1-4).
6. **Older Rangers with smaller front gearcase:** The self-starting screw (item #4) will thread into tapered frame hole.
7. **Newer Rangers with larger front gearcase:** From rear side of vehicle frame, loosely fasten self-starting screw (item #4) using locknut (item #2).



8. Install two each SHCS screws (item #3) and locknuts (item #2) at UPPER fastener holes. (See illustration 1-5) **Note: Front suspension components hidden for clarity.**




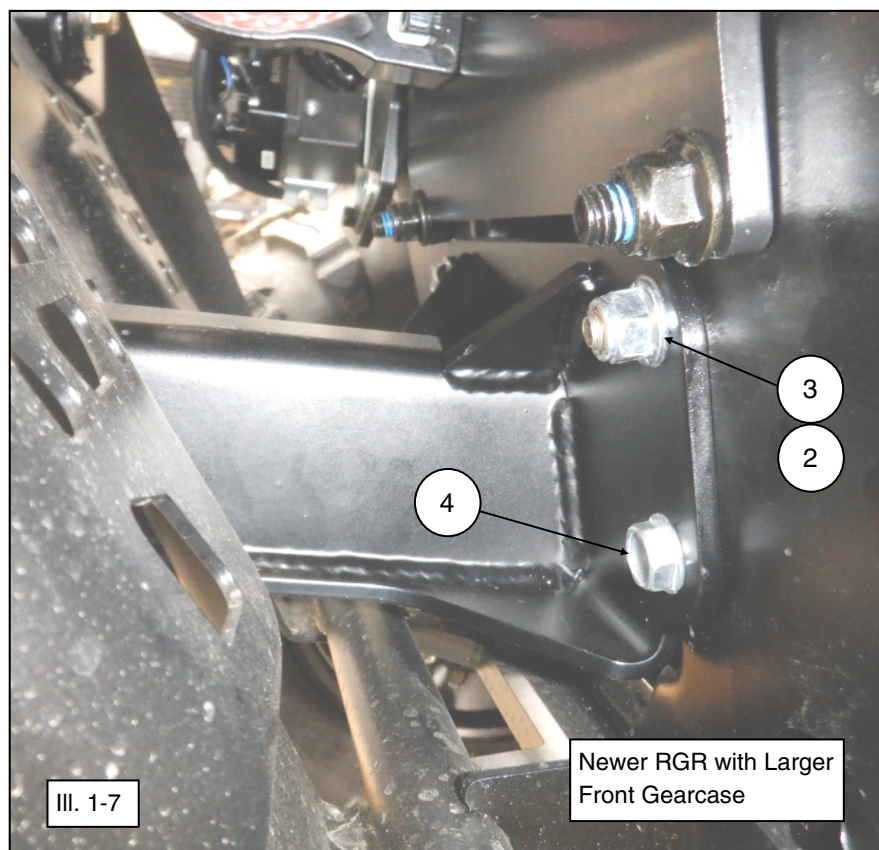
9. **Newer Rangers with larger front gearcase:** From rear side of vehicle frame, install SHCS screw (item #3) as shown. Fasten from front side using locknut (item #2). (See illustration 1-6).



Installation Instructions (Continued):

10. Tighten all hardware to specifications. (See illustration 1-7).

 = T
8MM FASTENER TORQUE: 17 ft. lbs. (23 Nm)



Use and Care Information:

- Check the accessory mounts frequently and retighten hardware if necessary.
- Replace this accessory with a new one if it is damaged.
- Never use petroleum solvents such as gasoline, thinner, benzene, acid or alkaline cleaners.

For additional assistance, please contact Kolpin customer service department at (877) 956-5746 or (763) 478-5800 or email customerservice@kolpin.com

One Year Limited Warranty

For the period of one (1) year from the purchase date, Kolpin will replace for the original purchaser, free of charge, any part or parts found upon examination by Kolpin to be defective in material, workmanship, or both.

All transportation costs incurred submitting product to Kolpin for warranty consideration must be borne by the purchaser. If Kolpin determines that the product must be returned to the factory for credit, please call 1-877-956-5746 for a Return Merchandise Authorization (RMA) number and shipping instructions.

This warranty does not apply to parts that have been damaged by accident, alteration, abuse, improper maintenance, normal wear, or other causes beyond the manufacturer's control. In order to protect you and your ATV, certain parts of the accessory system and/or hardware are designed to fail when the equipment is over-stressed. Parts that are lost due to loosening and improper maintenance are not covered under warranty. This warranty does not cover removal or reinstallation labor fees of the plow system and related components.

Peripheral products such as engines, electric motors, and actuators may carry an original manufacturer's warranty. Most hardware is general in nature and is easily obtained locally. Be sure to replace with minimum metric class 8.8 specification.