

FEEL THE HEAT!

Cargo Rack for Polaris General

Part # **02-1107** Polaris General - All Models Black

Congratulations of your purchase of the DragonFire Cargo Rack for the Polaris General. Need more space for storage? This product is the answer. Without sacrificing style, the Cargo Rack was designed to give your vehicle extra area to bring more gears. Be sure to check out the full line of DragonFire Accessories for your Polaris vehicle at your local authorized dealer or online at <http://www.DragonFireRacing.com>

WARNING

- Read and understand these instructions before installing product
- Do not overload rack as vehicle may become unstable
- Never stand or allow passengers on top of rack
- This product is rated for a load of no more than 150lbs or 68kg
- Do not use product if there are any signs of damage

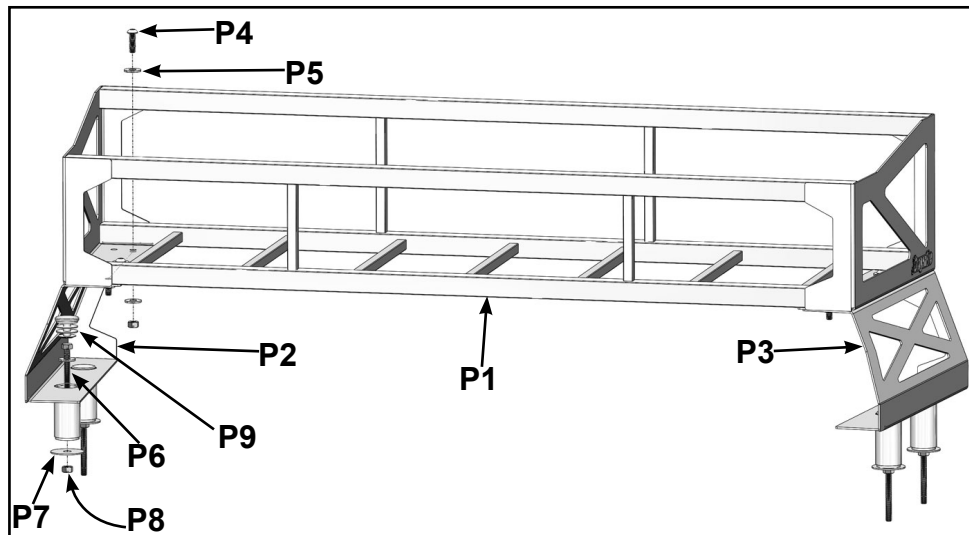
Disclaimer

Off road activities can be hazardous and could lead to injury, dismemberment, paralysis and death. No warranty of representation is made as to the products ability to protect the user from any injury or death. The user assumes that risk. The acceptance and /or use of this merchandise purchased from DragonFire by the customer hereby shall release DragonFire from any and all liability pertaining to the use of such merchandise.

Pre-installation: Lay out components and compare to list and images.

| Part & Hardware List | | | | | |
|----------------------|-----|----------|--------|------------------------------|-----------|
| ITEM | QTY | SIZE | LENGTH | TYPE | STEP USED |
| P1 | 1 | - | - | Cargo Rack | 14 |
| P2 | 1 | - | - | Bed Mount Driver | 9 |
| P3 | 1 | - | - | Bed Mount Passenger | 9 |
| P4 | 6 | 5/16"-18 | 1" | Button Head Cap Screw - Zinc | 15 |
| P5 | 16 | 5/16" | - | USS Flat Washer - Zinc | 10 & 15 |
| P6 | 4 | 5/16"-18 | 3" | Hex Bolt - Zinc | 10 |
| P7 | 4 | 3/8" | - | Fender Washer | 11 |
| P8 | 10 | 5/16" | - | Nylon Lock Nut - Zinc | 11 & 15 |
| P9 | 4 | 1-1/4" | - | Plastic End Cap | 17 |

| Tools Required |
|-------------------------|
| T30 Torx |
| T40 Torx |
| 5/16" Hex Head |
| 1/2" Combination Wrench |
| 1/2" Ratcheting Wrench |
| 1/2" Socket |
| Extension |
| Ratchet |



Step 1: Place vehicle on a flat and level surface. Place gear selector in "Park" and remove keys from the ignition.

Step 2: Unlatch the vehicle bed and tilt back. (Figure A)

Step 3: Remove the torx head bolt where shown. (Figure B)

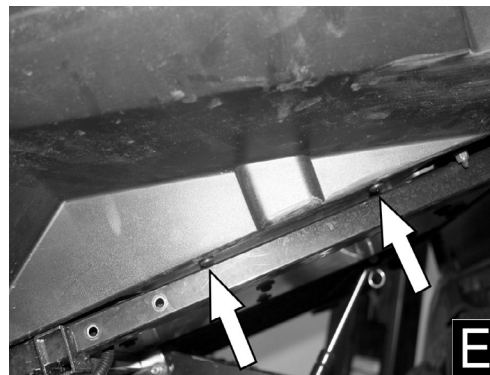
Step 4: Remove the outer plastic panel of the bed. (Figure C)



Step 5: Uninstall torx bolts on the inner fender liner at shown locations. (Figure D)

Step 6: Remove 2 torx bolts under inner fender liner. (Figure E)

Step 7: Lower and lock the bed. Then carefully set inner fender liner on top of tire or uninstall the taillight and then set fender aside. (Figure F)



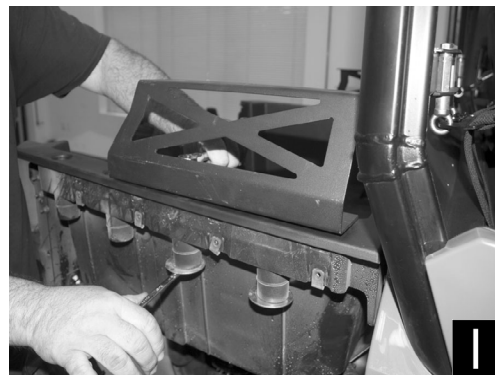
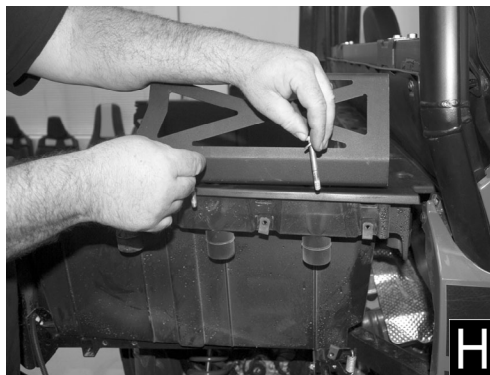
Step 8: Repeat Step 3 to 7 for opposite side.

Step 9: Place P2 into the Lock & Ride pockets on the driver side of bed and P3 into the pockets on the passenger side. Ensure brackets are aligned evenly on both sides. (Figure G)

Note: For maximum bed space, the Cargo Rack can be mounted in the two forward Lock&Ride pockets. To clear the DragonFire Spare Tire Carrier for Polaris General (**sold separately - P/N: 02-1106**), mount Cargo Rack in the two rearmost Lock&Ride pockets. The inner and outer holes of P1 will be utilized depending on the mount location.

Step 10: Place P6 and P5 into holes of bracket. (Figure H)

Step 11: Install P7 and P8 into bolts and then tighten the hardware until it is fully secured. Ensure the hardware is not too tight that it is flexing the plastic. (Figure I)



Step 12: Reinstall inner fender liner for both sides and torque to factory specifications. (Figure G)

Step 13: Reinstall plastic panel for both sides. (Figure K)

Step 14: Align the cargo rack to bed mounts. (Figure L) Ensure the taller side is facing toward the front of vehicle.



Step 15: Place P4 through P5. Then place through holes of cargo rack and bed mount. Install bolt with a P5 and P8. (Figure M)

Step 16: Repeat Step 15 for 5 more holes and torque hardware to 17 ft-lbs. (Figure N)

Step 17: Install plastic end caps (P9) into the holes of P2 and P3.

Step 18: This completes installation. Time to ride and enjoy!

ProTip: Periodically check all hardware and re-tighten if needed.

For further assistance please contact us at
customerservice@dragonfireracing.com or 1-800-708-9803.

